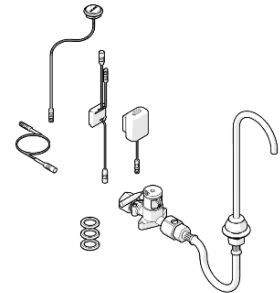




Product Installation Guidelines & Scope of Use

Version 1, 12 May 2026, Page 1 of 5  
Document No.: 001.00.30.38

# Ezy-Drink® CP-BS Lead Safe™ Remote Electronic Bottle Filler Tap



PRODUCT CODE:

- 170.14.11.00 (Full unit)
- 170.14.40.00 (Outlet only)

## SPECIFICATIONS

- High quality chrome finish outlet for easy cleaning, added durability and hygiene maintenance
- Designed and manufactured in Australia, therefore, spare parts and support are available locally, reducing costs of downtime on maintenance
- Piezo button activation
- Adjustable built-in flow regulator
- Manufactured using Lead Free DZR Brass with less than 0.25% lead content\*

**IMPORTANT:** All Ezy-Drink® remote bottle fillers are tested in accordance with AS 3718 and leave our premises in good working order.

\*Our Lead Safe™ product range is compliant with the Lead-Free Requirements of the NCC 2022 Vol. Three, Clause A5G4(2) and NSF/ANSI 372.

\*\* Any flow controller incorporated in the outlet to be tightened to prevent removal by hand. As Per AS3718.

**WARNINGS:** Special attentions to be paid on notes, photos, images, or drawings of assembly steps marked with the warning symbol.



## TECHNICAL DATA

Inlet	170.14.11.00	G ½" – Female
	170.14.40.00	G ½" – Male
Outlet		Gooseneck
Headwork	170.14.11.00	Piezo Activation
	170.14.40.00	N/A
Working Pressure Range (kPa)	Min	50
	Max	500
Working Temperature Range (°C)	Min	5
	Max	60
Finish		Chrome

**NOTE:** Galvin Engineering continually strive to improve their products. Specifications may change without notice.

## TOOLS REQUIRED

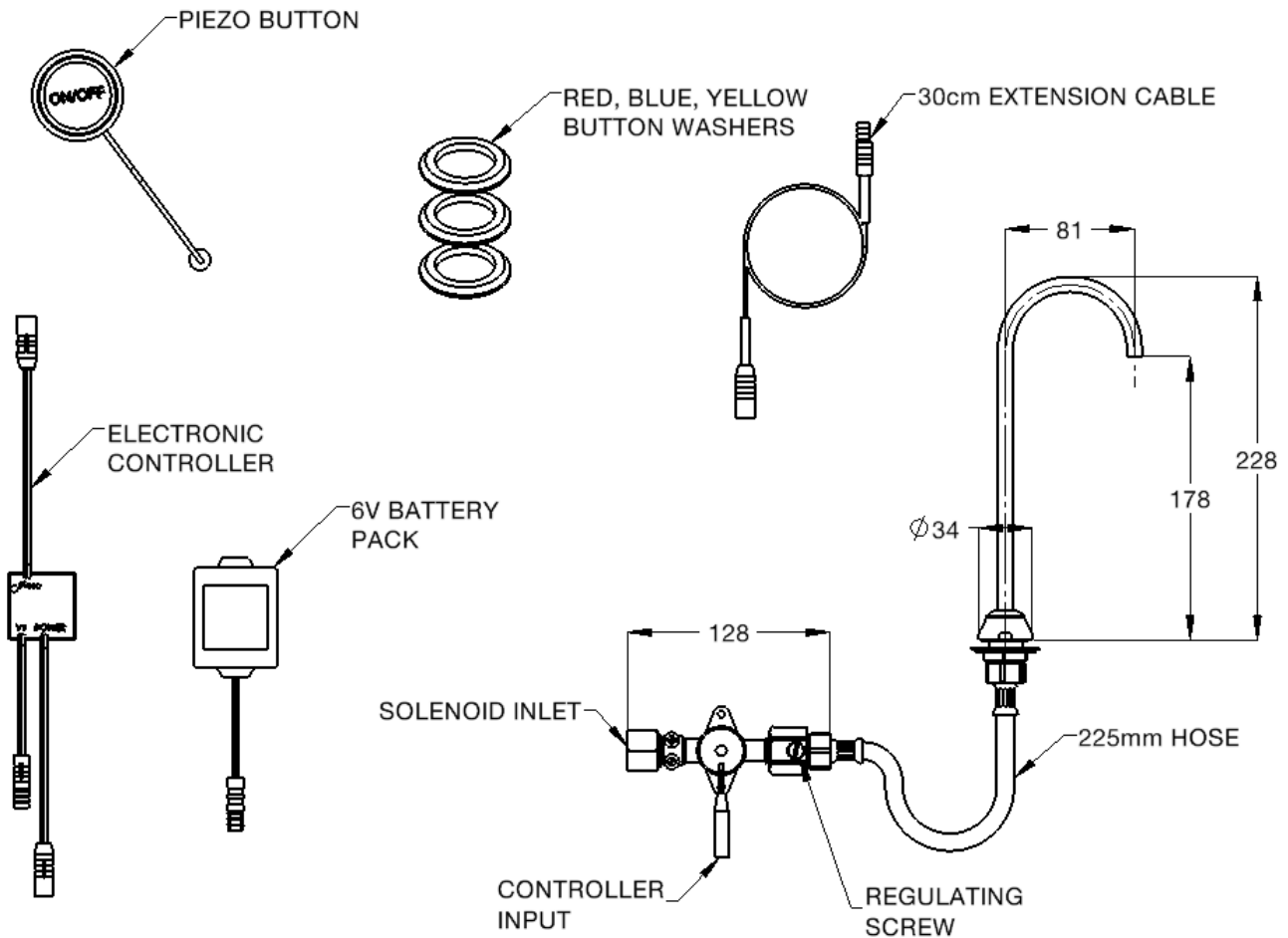
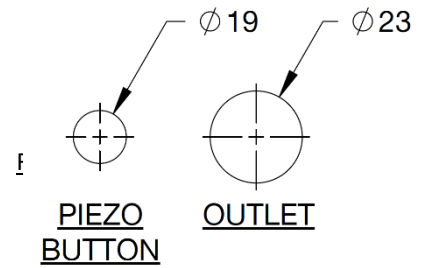
- Power Drill
- Spanner
- 2mm Hex key
- Screw driver

**PRE-INSTALLATION - MOUNTING DETAILS**

- If the mounting holes do not already exist, mark out and drill the holes in the bench/trough, as shown in rough-in dimensions.

*Note: Supplied flexi hose length is 225mm long.*

*Before installation, all lines must be flushed. We recommend that a line strainer be installed prior to drinking taps to eliminate any foreign material.*

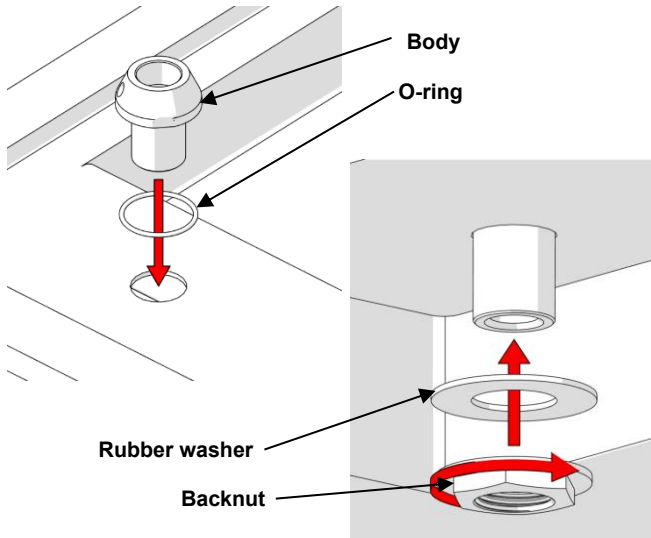


**!** If specific changes need to be made to programming, contact Galvin Engineering.

**!** During the commissioning process, it's important to note that the controller comes with an automatic programming lock feature. Once the initial 15-minute programming duration expires after commissioning, programming access will be disabled. Rapidly pressing the piezo button during this 15-minute commissioning window can alter programming, leading to reprogramming the controller beyond its default manufactured setting. To avoid potential issues with product functionality, please refrain from attempting to modify the programming during the commissioning period.

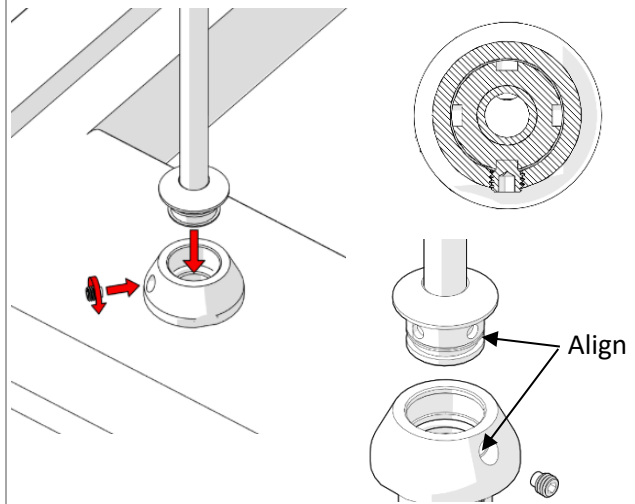
## INSTALLATION

**INSTALLATION COMPLIANCE:** Galvin Engineering products must be installed in accordance with these installation instructions and in accordance with AS/NZS 3500, the PCA and your local regulatory requirements. Water and/or electrical supply conditions must also comply to the applicable national and/or state standards. Failing to comply with these provisions shall void the product warranty and may affect the performance of the product.



### 1. Fit Body

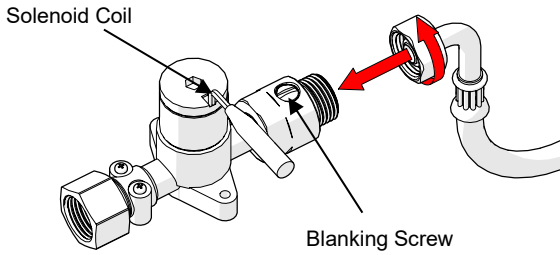
- Fit the body into the trough ensuring the o-ring is placed between the trough and the body.
- Fit rubber washer and backnut then tighten.



### 2. Fit Bottle Filler Outlet

- Fit filler outlet into stem ensuring it is seated correctly and the O-ring is present.
- Turn the filler outlet to the desired position. Outlet can be rotated and secured in four (4) 90-degree positions as shown.
- Once positioned, fit, and tighten grub screw. The filler outlet should no longer turn.

**⚠ Note:** **For 170.14.40.00 (Outlet only)**, connect existing flexi hose to body, turn on mains water and test for correct operation after Step 2.  
**For 170.14.11.00 (Full Unit)**, proceed to Step 3.



### 3. Fit Flexi Hose

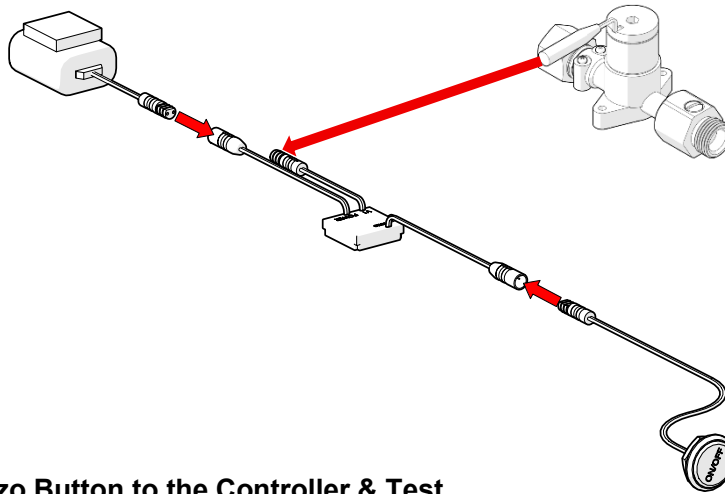
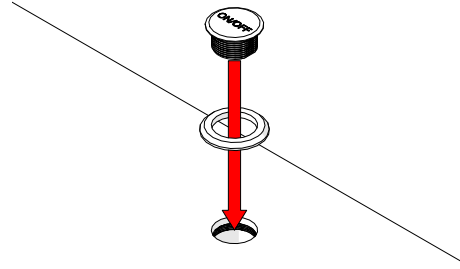
**!** Fix the solenoid in position ensuring that the solenoid coil is not facing downwards.

- Fit one end of the flexi hose to solenoid as shown. Connect the other end to the body.
- Connect mains water to inlet.
- To adjust water flow
  - a. Remove the blanking screw.
  - b. Adjust the water height by turning the regulating screw.
  - c. Once desired height has been achieved, replace blanking screw.

**!** **Note:** The full range from minimum flow to maximum flow is only  $\frac{1}{4}$  turn.

### 4. Fit the Piezo Button

- Fit the piezo button and coloured washer into the pre-drilled hole.
- Secure using the supplied nut.



### 5. Connect the Piezo Button to the Controller & Test

- Connect the controller to the solenoid and the battery pack.
- Connect the piezo button to the controller (as shown).
- Turn on water and test for leaks and correct operation.

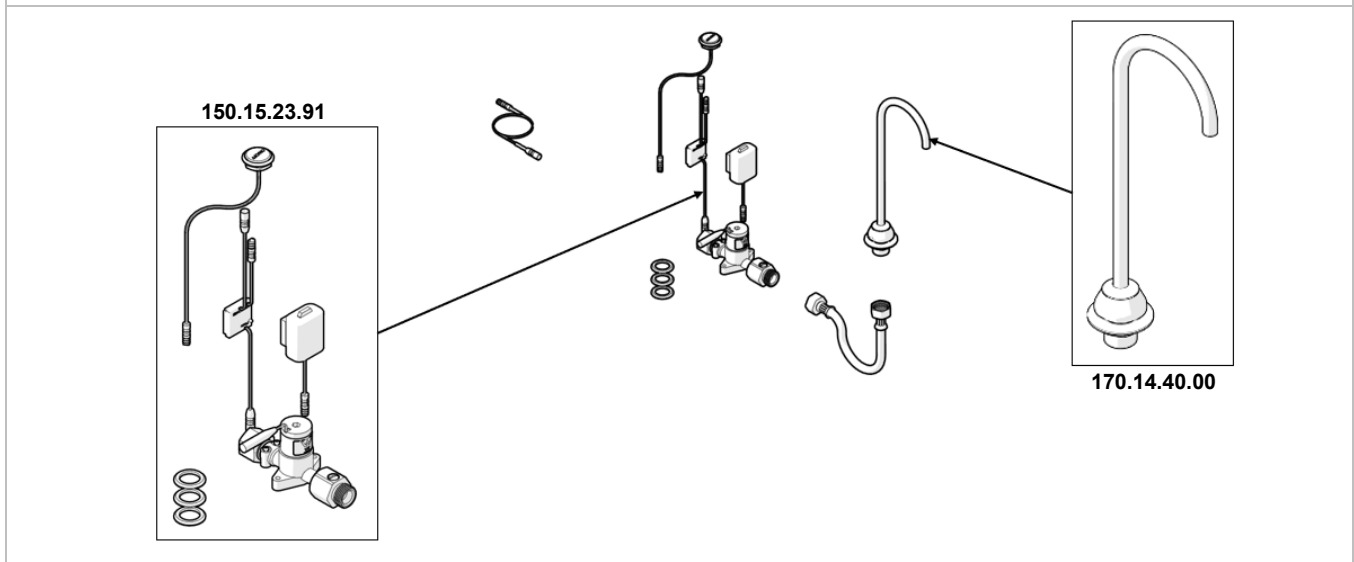
**!** **NOTE:** In the first fifteen minutes after connecting the power supply, do not repeatedly press the piezo button as this can alter the unit programming.

**TROUBLESHOOTING**

PROBLEM	CAUSE	RECTIFICATION
Water is leaking	Incorrectly installed.	Follow the installation instructions and ensure the o-ring is correctly installed. Check for debris in the outlet.
Spout still rotates	Grub screw incorrectly installed.	Ensure the spout inlet position hole is lined up with the outlet grub screw hole. Reinstall grub screw.
Water is not flowing from tap	Water is turned off	Turn on water
	Blocked flow regulating screw	Remove flow regulating screw and clean
Rate of flow inadequate	The flow regulating screw may not be adjusted correctly	Remove blanking screw and adjust flow regulating screw as described above

**SPARE PARTS**

- 170.14.40.00 - Ezy-Drink® CP-BS Lead Safe™ Bottle Filler Outlet
- 150.15.23.91 - Flowmatic® Lead Safe™ Ligature Resistant Tapware Solenoid Kit with Piezo Act - Battery Power (20s)



**WARRANTY**

Galvin Engineering products are covered under our Manufacturer's Warranty. Galvin Engineering products must be installed in accordance with the installation instructions and in accordance with AS/NZS 3500 and NCC Volume Three, relevant Australian Standards and local authorities applicable to product being installed. Water and electrical supply conditions must also comply to the applicable national and/or state standards, failing to comply with these provisions may void the product warranty and affect performance of the product.

Please visit [www.galvinengineering.com.au](http://www.galvinengineering.com.au) to view the full warranty, our Installation Compliance and Maintenance & Cleaning information as well as any other additional information.